

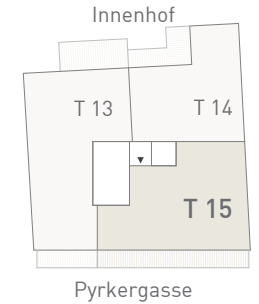
# PYR25 1190 Wien, Pyrkergerasse 25



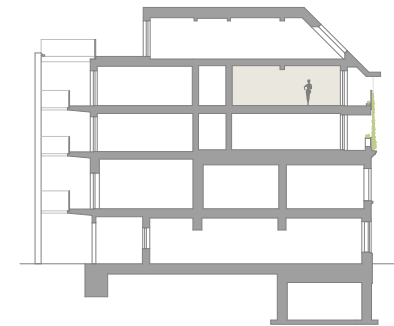
## LEGENDE

- KS ..... Kühlschrank
- WM ..... Waschmaschine
- GS ..... Geschirrspüler
- AC ..... Klimaanlage
- KA ..... Kaminanschluss
- VR ..... Vorraum
- AR ..... Abstellraum
- SR ..... Schrankraum

## LAGE



## SCHNITT



## RÄUME

- VR ..... ca. 4,7m<sup>2</sup>
- Wohnküche .... ca. 34,1m<sup>2</sup>
- Zimmer I ..... ca. 11,0m<sup>2</sup>
- Zimmer II ..... ca. 9,1m<sup>2</sup>
- SR ..... ca. 7,2m<sup>2</sup>
- Bad/WC I ..... ca. 6,0m<sup>2</sup>
- Bad/WC II ..... ca. 4,7m<sup>2</sup>
- Zimmer III ..... ca. 9,5m<sup>2</sup>
- AR ..... ca. 1,9m<sup>2</sup>
- VR II ..... ca. 2,2m<sup>2</sup>
- Loggia ..... ca. 16,6m<sup>2</sup>

WOHNFLÄCHE ca. 107,4 m<sup>2</sup>

# TOP 15 / 3.OG

